

**Anderson, Caryl Eva**

*General*

Transferred from Williamsburg



**Ashby, Linda L.**

*Commercial*

Glee Club 1  
Co-op 4



**Anderson, Howard**

*Commercial*

Transferred from Elk Rapids  
Red Cross Delegate 4



**Bacon, Sara**

*College Prep*

Transferred from Williamsburg  
Black and Gold 2, 3  
Challenger 3, 4  
Quill and Scroll 3, 4  
Scholastic Honor Pins 3  
F. T. A. 2  
F. N. A. 2



**Anderson, Robert F.**

*College Prep*

Transferred from Manistee  
Football 4  
Track 1, 2, 3, 4  
Intramural 3, 4  
Varsity Club 3, 4  
Varsity Club Choir 4  
Varsity Club Vice-President



**Bannen, Ken**

*College Prep*

Superintendent Council 4  
Bogi Council 1, 4  
Football 1, 2, 3, 4  
Basketball 1, 2, 3, 4  
Varsity Club 3, 4  
Bogi Council President 4



**Arthur, Judy Anne**

*College Prep*

Pines 4  
Challenger 2  
Play Committee 4  
Government Day Committee 4  
National Honor Society 2, 4  
Scholastic Honor Pins 1, 2  
Formal Committee 3, 4  
National Honor Society Treasurer 4  
Pep Club 3, 4



**Bannon, Judy Ann**

*College Prep*

Pines 3, 4  
Junior Class Play  
Glee Club 1  
Government Day Committee 4  
Quill and Scroll 3, 4  
Formal Committee 3, 4  
Pep Club 1, 2, 3, 4  
Bowling 3, 4



Deceased

**Arthur, Leo**

*College Prep*

Play Committee 3  
Band 1, 2  
Choir 3  
Dance Band, 1, 2  
Sophomore President  
Junior President  
Senior President  
Student Council 1, 2, 3, 4  
Superintendent Council 2, 3, 4  
National Honor Society 3, 4  
Boys State 3  
Bible Club 2, 3, 4  
Choir Council 3



**Bain, Richard B.**

*College Prep*

Football 1, 2  
Intramural 1  
Hi-Y 4  
Ski Club 3, 4



**Barner, Patsy M.**

*College Prep*

Pines 4  
Play Committee 3, 4  
Choir 2, 3, 4  
Operetta 3, 4  
Glee Club 1  
Formal Committee 3, 4  
Bible Club 3  
Pep Club 1, 2, 3, 4  
Choir Council 4



**Bellfy, Vivian A.**

*College Prep*

Challenger 1  
Junior Class Play  
Play Committee 4  
Band 1, 2, 3  
Orchestra 1, 2, 3  
Formal Committee 3, 4  
Teacher's Aid 4  
Solo and Ensemble Festival 2  
Bowling President 2  
Bowling Secretary 3  
Bowling 1, 2, 3  
Ski Club 2, 3  
Pep Club 1, 2, 3, 4  
Modern Dance 1

**Bates, Dorothy**

*College Prep*

Band 1  
Bogi Council 4  
Formal Committee 3, 4  
Pep Club 1, 2, 3  
Bowling 2, 3  
Co-op 4



**Bickle, Sharon Lee**

*College Prep*

Watchbird 1  
Band 1, 2, 3, 4  
Orchestra 4  
Red Cross Delegate 1  
Pep Club 1, 2, 3

**Baynton, Sharon Jill**

*College Prep*

Play Committee 3  
Choir 2, 3  
Operetta 3  
Red Cross Delegate 3  
AFS Committee 4  
Pep Club 2, 3, 4  
Ski Club 2, 3, 4  
G. A. A. 1, 2  
F. A. A. 1, 2  
Bowling 3, 4  
Senior Class Play



**Billadeau, Chuck**

*General*

Band 1  
Machine Shop Club 1

**Beckwith, Bonnie J.**

*General*

Glee Club 1  
Red Cross Delegate 2  
F. H. A. 3, 4  
Bowling 3



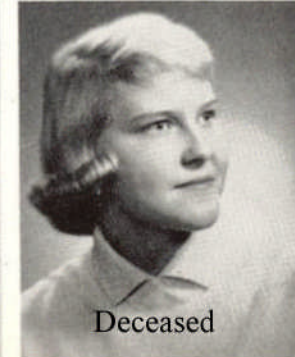
**Billadeau, Larry J.**

*College Prep*

**Bellaw, Donald William**

*General*

Transferred from St. Francis



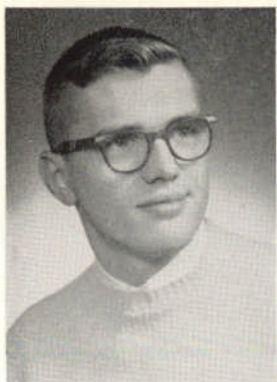
**Birkman, Beverly Jean**

*College Prep*

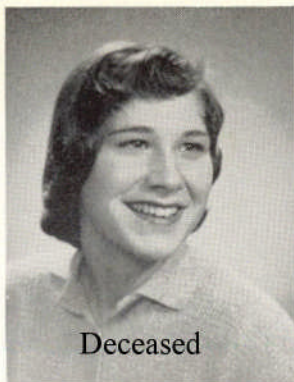
Watchbird 1  
Junior Class Play  
Play Committee 4  
Bogi Council 3  
Government Day Committee 4  
Pep Club Council 3  
Formal Committee 3, 4  
Pep Club 1, 2, 3, 4  
Girls Rifle Club 4  
Ski Club 2  
Bowling 2

Deceased

**Blow, Glen**  
*College Prep*  
 Football 1, 2, 3, 4  
 Track 1, 2



**Breithaupt, Darleen**  
*College Prep*  
 Junior Class Play  
 Red Cross Delegate 2  
 F. T. A. 1  
 Bowling 2, 3  
 Bowling Treasurer 2  
 Pep Club 2, 3, 4  
 Co-op 4



Deceased

**Boothroyd, Greg**  
*College Prep*  
 Tennis 2  
 Intramural 1, 2, 3  
 Varsity Club 3, 4  
 Varsity Club Choir 4  
 Student Council 1  
 Ski Club 4



**Brock, Rolene**  
*Commercial*

**Bostwick, Sharon Lee**  
*Commercial*  
 Transferred from Owosso  
 Glee Club 3  
 Red Cross Delegate 3  
 Formal Committee 3, 4  
 Pep Club 3, 4  
 Ski Club 4



**Brown, Patsy**  
*Commercial*  
 Formal Committee 3  
 Pep Club 1, 2, 3

**Braden, Mary**  
*Commercial*



**Brown, Sandra**  
*Commercial*  
 Glee Club 1, 2  
 Formal Committee 3  
 Pep Club 1

**Braun, Garry R.**  
*College Prep*  
 Transferred from South Lyon  
 Junior Class Play  
 Play Committee 4  
 Student Council 1  
 Government Day Council 4  
 Baseball 3, 4  
 Intramural 1, 3, 4  
 Formal Committee 3, 4  
 Varsity Club 3, 4  
 Varsity Club Choir 4  
 AFS Committee 4  
 Spanish Club 1



**Browning, Mel**  
*General*

**Brownson, Paul J.**

*College Prep*

- Black and Gold 2, 3, 4
- Play Committee 3
- Student Council 1, 2, 3
- Government Day Committee 4
- National Honor Society 3, 4
- Scholastic Honor Pins 1, 2, 3, 4
- Formal Committee 3, 4
- Black and Gold Press Club 2, 3, 4
- Black and Gold Press Club Vice-President 4
- National Honor Society President 4
- Ski Club 2, 3, 4
- Quill and Scroll 4



**Campbell, Marie Carole**

*College Prep*

- Pines 3, 4
- Challenger 2
- Play Committee 3
- Red Cross Delegate 1
- Quill and Scroll 3, 4
- Formal Committee 3, 4
- Pep Club 1, 2, 3, 4
- AFS Committee 4
- Senior Class Play

**Bugai, Carolyn Ann**

*Commercial*

- Pep Club 1
- F. H. A. 1



**Canfield, Helen Jean**

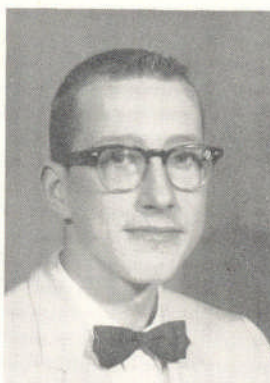
*Commercial*

- F. H. A. 4

**Bunek, Ira F.**

*Agriculture*

- Aviation 1
- Bowling 1, 2
- F. F. A. 1, 2, 3, 4
- Co-op 3, 4



**Carpenter, Jeffery R.**

*General*

- Glee Club 1
- Intramural 2

**Burkholder, Gary S.**

*College Prep*

- Baseball 3
- Intramural 1, 2, 3
- Formal Committee 3
- Junior Conservation Club 1
- Co-op 4



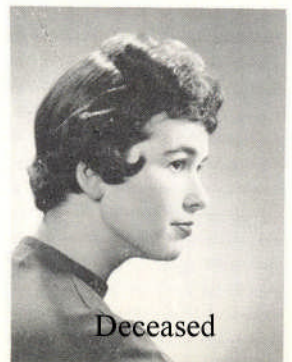
**Carroll, John M.**

*College Prep*

- Football 3, 4
- Basketball 2, 3, 4
- Baseball 1, 2, 3, 4
- All Conference Football
- All State Football
- All State Basketball
- All Conference Basketball
- Varsity Club 2, 3, 4

**Burley, Sharon Miller**

*College Prep*



**Carroll, Roger K.**

*Commercial*

- Bogi Council 4
- Basketball 1, 2
- Track 3, 4
- Intramural 4
- Varsity Club 3, 4
- Varsity Club Choir 4

**Carter, Ford Wynn**

*General*

Glee Club 1  
Football 3, 4  
Intramural 1, 2, 3, 4  
All Conference Football  
Varsity Club 3, 4  
Senior Class Play



**Chilson, Ann Marie**

*Commercial*

F. H. A. 4  
F. H. A. Reporter 4



**Case, Karla Kay**

*College Prep*

Play Committee 4  
Formal Committee 4  
Spanish Club 2  
Modern Dance 4  
Girls Rifle Club 4  
Girls Rifle Club Secretary 4



**Chimoskey, Kay F.**

*College Prep*

Pines 3, 4  
Watchbird 1  
Play Committee 3, 4  
Bogi Council 1, 4  
Bogi Council Secretary 4  
National Honor Society 3, 4  
Quill and Scroll 3, 4  
Girls State 3  
Scholastic Honor Pins 1, 2, 3, 4  
Formal Committee 3, 4  
Pep Club 1, 2, 3, 4  
AFS Committee 4  
Bowling 3, 4  
State Driver Ed. Champion 3



**Challender, Shirley Mae**

*General*

Bible Club 1, 2, 4



**Clement, William**

*General*



**Champagne, John Howard**

*College Prep*

Transferred from St. Francis  
Government Day Committee 4



**Clune, Louise**

*College Prep*

Red Cross Delegate 3  
Government Day Committee 4  
National Honor Society 3, 4  
Scholastic Honor Pins 1, 2, 3, 4  
Pep Club 3, 4



**Cheeseman, Jonas**

*General*

F. F. A. 2, 3, 4



**Coddington, Connie**

*Commercial*

Band 1, 2, 3  
Orchestra 2, 3  
Bowling 2  
Band Council 2, 3  
Orchestra Council 2  
Pep Club 2

